

**STAT1 Antibody (clone AT1FA)**  
**Mouse Monoclonal Antibody**  
**Catalog # ALS15894****Specification**

---

**STAT1 Antibody (clone AT1FA) - Product Information**

Application	WB, IHC-P, E
Primary Accession	<a href="#">P42224</a>
Reactivity	Human
Host	Mouse
Clonality	Monoclonal
Calculated MW	87kDa KDa
Dilution	WB~~1:1000 IHC-P~~N/A E~~N/A

**STAT1 Antibody (clone AT1FA) - Additional Information****Gene ID** 6772**Other Names**

Signal transducer and activator of transcription 1-alpha/beta, Transcription factor ISGF-3 components p91/p84, STAT1

**Target/Specificity**

Human STAT1

**Reconstitution & Storage**

Can be stored at 4°C. For long term storage, aliquot and store at -20°C. Avoid repeated freezing and thawing cycles.

**Precautions**

STAT1 Antibody (clone AT1FA) is for research use only and not for use in diagnostic or therapeutic procedures.

**STAT1 Antibody (clone AT1FA) - Protein Information****Name** STAT1**Function**

Signal transducer and transcription activator that mediates cellular responses to interferons (IFNs), cytokine KITLG/SCF and other cytokines and other growth factors (PubMed:<a href="http://www.uniprot.org/citations/12764129" target="\_blank">12764129</a>, PubMed:<a href="http://www.uniprot.org/citations/12855578" target="\_blank">12855578</a>, PubMed:<a href="http://www.uniprot.org/citations/15322115" target="\_blank">15322115</a>, PubMed:<a href="http://www.uniprot.org/citations/23940278" target="\_blank">23940278</a>, PubMed:<a href="http://www.uniprot.org/citations/34508746" target="\_blank">34508746</a>, PubMed:<a href="http://www.uniprot.org/citations/35568036" target="\_blank">35568036</a>, PubMed:<a

[9724754](http://www.uniprot.org/citations/9724754)). Following type I IFN (IFN-alpha and IFN-beta) binding to cell surface receptors, signaling via protein kinases leads to activation of Jak kinases (TYK2 and JAK1) and to tyrosine phosphorylation of STAT1 and STAT2. The phosphorylated STATs dimerize and associate with ISGF3G/IRF-9 to form a complex termed ISGF3 transcription factor, that enters the nucleus (PubMed:[28753426](http://www.uniprot.org/citations/28753426), PubMed:[35568036](http://www.uniprot.org/citations/35568036)). ISGF3 binds to the IFN stimulated response element (ISRE) to activate the transcription of IFN-stimulated genes (ISG), which drive the cell in an antiviral state (PubMed:[28753426](http://www.uniprot.org/citations/28753426), PubMed:[35568036](http://www.uniprot.org/citations/35568036)). In response to type II IFN (IFN-gamma), STAT1 is tyrosine- and serine-phosphorylated (PubMed:[26479788](http://www.uniprot.org/citations/26479788)). It then forms a homodimer termed IFN-gamma-activated factor (GAF), migrates into the nucleus and binds to the IFN gamma activated sequence (GAS) to drive the expression of the target genes, inducing a cellular antiviral state (PubMed:[8156998](http://www.uniprot.org/citations/8156998)). Becomes activated in response to KITLG/SCF and KIT signaling (PubMed:[15526160](http://www.uniprot.org/citations/15526160)). May mediate cellular responses to activated FGFR1, FGFR2, FGFR3 and FGFR4 (PubMed:[19088846](http://www.uniprot.org/citations/19088846)). Following bacterial lipopolysaccharide (LPS)-induced TLR4 endocytosis, phosphorylated at Thr-749 by IKBKB which promotes binding of STAT1 to the 5'-TTTGAGGC-3' sequence in the ARID5A promoter, resulting in transcriptional activation of ARID5A and subsequent ARID5A-mediated stabilization of IL6 (PubMed:[32209697](http://www.uniprot.org/citations/32209697)). Phosphorylation at Thr-749 also promotes binding of STAT1 to the 5'-TTTGAGTC-3' sequence in the IL12B promoter and activation of IL12B transcription (PubMed:[32209697](http://www.uniprot.org/citations/32209697)). Involved in food tolerance in small intestine: associates with the Gasdermin-D, p13 cleavage product (13 kDa GSDMD) and promotes transcription of CIITA, inducing type 1 regulatory T (Tr1) cells in upper small intestine (By similarity).

### Cellular Location

Cytoplasm. Nucleus Note=Translocated into the nucleus upon tyrosine phosphorylation and dimerization, in response to IFN-gamma and signaling by activated FGFR1, FGFR2, FGFR3 or FGFR4 (PubMed:15322115). Monomethylation at Lys- 525 is required for phosphorylation at Tyr-701 and translocation into the nucleus (PubMed:28753426). Translocates into the nucleus in response to interferon-beta stimulation (PubMed:26479788)

### Volume

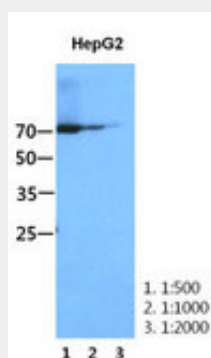
50 µl

### STAT1 Antibody (clone AT1FA) - Protocols

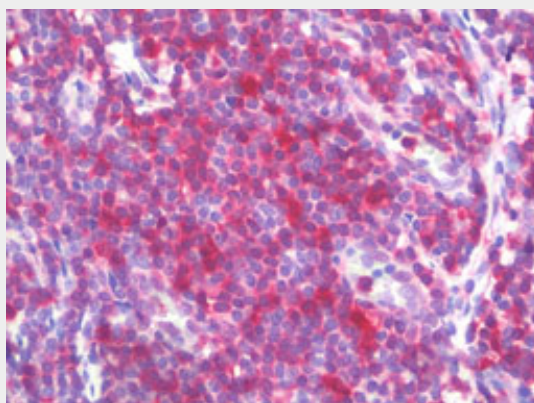
Provided below are standard protocols that you may find useful for product applications.

- [Western Blot](#)
- [Blocking Peptides](#)
- [Dot Blot](#)
- [Immunohistochemistry](#)
- [Immunofluorescence](#)
- [Immunoprecipitation](#)
- [Flow Cytometry](#)
- [Cell Culture](#)

### STAT1 Antibody (clone AT1FA) - Images



Western Blot: The HepG2 cell lysate (50 ug) were resolved by SDS-PAGE, transferred to PVDF...



Anti-STAT1 antibody IHC staining of human tonsil.

### **STAT1 Antibody (clone AT1FA) - Background**

Signal transducer and transcription activator that mediates cellular responses to interferons (IFNs), cytokine KITLG/SCF and other cytokines and other growth factors. Following type I IFN (IFN-alpha and IFN-beta) binding to cell surface receptors, signaling via protein kinases leads to activation of Jak kinases (TYK2 and JAK1) and to tyrosine phosphorylation of STAT1 and STAT2. The phosphorylated STATs dimerize and associate with ISGF3G/IRF-9 to form a complex termed ISGF3 transcription factor, that enters the nucleus. ISGF3 binds to the IFN stimulated response element (ISRE) to activate the transcription of IFN- stimulated genes (ISG), which drive the cell in an antiviral state. In response to type II IFN (IFN-gamma), STAT1 is tyrosine- and serine-phosphorylated. It then forms a homodimer termed IFN- gamma-activated factor (GAF), migrates into the nucleus and binds to the IFN gamma activated sequence (GAS) to drive the expression of the target genes, inducing a cellular antiviral state. Becomes activated in response to KITLG/SCF and KIT signaling. May mediate cellular responses to activated FGFR1, FGFR2, FGFR3 and FGFR4.

### **STAT1 Antibody (clone AT1FA) - References**

Schindler C.,et al.Proc. Natl. Acad. Sci. U.S.A. 89:7836-7839(1992).  
Kristensen I.,et al.Submitted (NOV-2009) to the EMBL/GenBank/DDBJ databases.  
Ota T.,et al.Nat. Genet. 36:40-45(2004).  
Bechtel S.,et al.BMC Genomics 8:399-399(2007).  
Kalnina N.,et al.Submitted (MAY-2003) to the EMBL/GenBank/DDBJ databases.